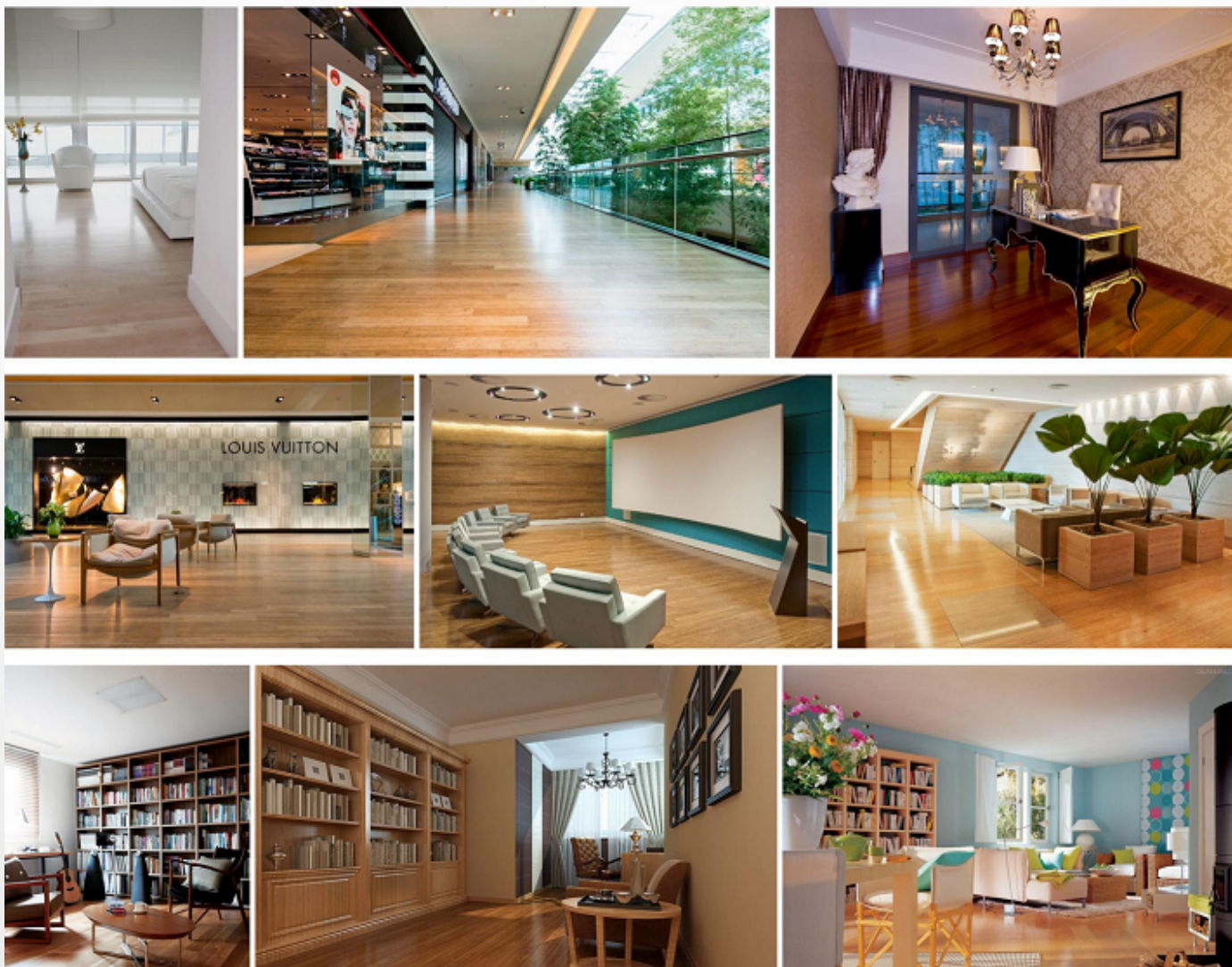


WELL NATURE BAMBOO



PRODUCT CATALOG

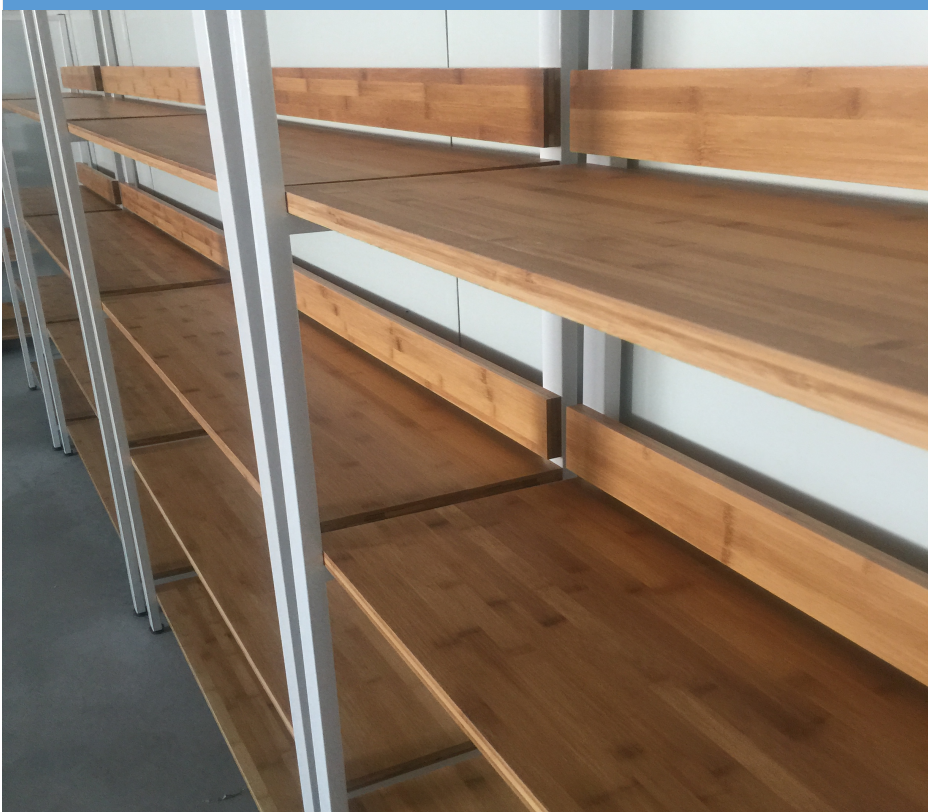
HUIZHOU WELL NATURE BAMBOO

www.htrbamboo.com

sales@htrbamboo.com

ABOUT US

Hui Zhou Well Nature Bamboo Products Co., LTD. was founded in 2009. We are specialized in manufacturing various bamboo products. We have over 150 experienced workers and own a full range of sophisticated equipment for manufacturing bamboo veneers from raw bamboo to the final products. Our annual production capacity has reached 2000,000 square meters and our products have been exported to more than 20 countries in the world. Many years of production experiences and passion for product innovation have made us a first-class supplier of bamboo products. We believe in great quality and service. The materials we use for production are selected carefully. We only use 6-8 years old bamboo which has enough hardness and density. With stable quality and great service, we guarantee your satisfaction. Please feel free to contact us. Our efficient and creative staffs will always be ready to serve you.



PRODUCTS

01

1 PLY BAMBOO

Thin Plywood (< 4mm thickness)

05

WOOD VENEER

Engineered

02

1 PLY BAMBOO

Plywood (5mm to 20mm thickness)

06

WOOD VENEER

Nature

03

MULTI-PLY BAMBOO

Plywood (8mm onwards thickness)

04

BAMBOO VENEER



Thin Plywood (< 4mm thickness)



Natural Color Horizontal Grain

Great Texture, Natural bamboo looking pattern. Dimension can be customized.



Natural Color Vertical Grain

Relatively Stronger than Horizontal pattern, Natural color and natural pattern. Dimension can be customized.



Carbonized Color Horizontal Grain

Darker Color, Nice bamboo pattern. Dimension can be customized.



Carbonized Color Vertical Grain

Darker Color, Nice bamboo Pattern and strong board. Dimension can be customized.

Common Abbreviation:

- **Color:** Natural (N), Carbonized (C), Zebra Color (Z), Custom design color pattern(M)
- **Grain:** Horizontal (H), Vertical (V)

Thin Bamboo Plywood

Products ID	Thickness(mm)	Grain	Color	Common Size(mm)
BP-H1-N/C	1.6	H	N, C	1200x300
BP-V1-N/C/Z/M	1.6	V	N, C, Z, M	1200x300
BP-H2-N/C	2.0, 2.5	H	N, C	1200x300 2000x300
BP-V2-N/C/Z/M	2.0, 2.5	V	N, C, Z, M	1200x300 2000x300
BP-H3-N/C	2.8, 3.0	H	N, C	1200x280 2000x300 2000x600
BP-V3- N/C/Z/M	2.8, 3.0	V	N, C, Z, M	1200x280 2000x300 2000x600
BP-H4-N/C	4.0	H	N, C	1200x280 2000x300 2000x600
BP-V4- N/C/Z/M	4.0	V	N, C, Z, M	1200x280 2000x300 2000x600

1 Ply Bamboo Plywood

Products ID	Thickness(mm)	Grain	Color	Common Size(mm)
BP-H5-N/C	5	H	N, C, Z, M	2000x600
BP-V5-N/C	5	V	N, C, Z, M	2000x600 1220x300
BP-H6-N/C	6	H	N, C, Z, M	2000x600
BP-V6-N/C	6	V	N, C, Z, M	2000x600 1220x300
BP-H7-N/C	7	H	N, C, Z, M	2000x600
BP-V7-N/C	7	V	N, C, Z, M	2000x600 1220x300
BP-V8-N/C	8	V	N, C, Z, M	2000x600 1220x300
BP-V9-N/C	9	V	N, C, Z, M	2000x600 1220x300
BP-V10-N/C	10	V	N, C, Z, M	2000x600 1220x300
BP-V12-N/C	12	V	N, C, Z, M	2000x600 1220x300
BP-V16-N/C	16	V	N, C, Z, M	2000x600
BP-V18-N/C	18	V	N, C, Z, M	2000x600 1220x300
BP-V20-N/C	20	V	N, C, Z, M	2000x600 2440x1220



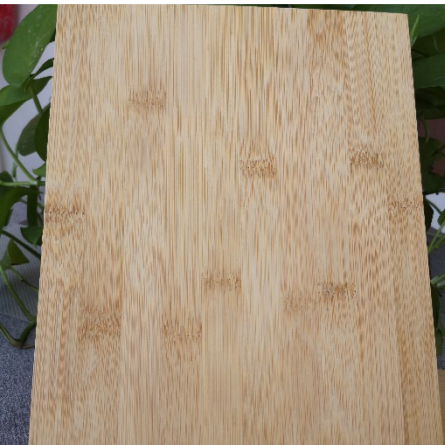
Horizontal Simple Laminated

Great Texture, Natural bamboo looking pattern. Dimension can be customized.



Vertical Simple Laminated

Relatively Stronger than Horizontal pattern, Natural color and natural pattern. Dimension can be customized.



Horizontal Cross Laminated

Darker Color, Nice bamboo pattern. Dimension can be customized.



I-Shape Laminated

Strongest board. Combines advantage of both horizontal grain and vertical grain. From top to bottom: Horizontal Grain, Vertical Grain, Horizontal Grain. Dimension and thickness can be customized.

Products ID	Category	Thickness (mm)	Grain	Color	Common Size(mm)
BP-2P-H8-N/C	2-Ply-H	8mm	H	N, C	2000x600 2440x1220
BP-2P-H9-N/C	2-Ply-H	9mm	H	N, C	2000x600 2440x1220
BP-2P-H10-N/C	2-Ply-H	10-15mm	H	N, C	2000x600 2440x1220
BP-MP-H16-N/C	M-Ply-H	16mm+	H	N, C	2000x600 2440x1220
BP-2P-V26-N/C	2-Ply-V	26mm+	V	N, C	2000x600 2440x1220
BP-3P-H9-N/C	3-Ply-H-Cross	9mm+	H	N, C	2000x600 2440x1220
BP-3P-I5-N/C	3-Ply I-Shape	5mm+	H & V	N, C	2000x600 2440x1220
BP-5P-H25-N/C	5-Ply H Cross	25mm+	H	N, C	2000x600 2440x1220
BP-5P-V25-N/C	5-Ply V Cross	25mm+	V	N, C	2000x600 2440x1220

Natural Color Horizontal Grain



Product ID	L(mm)	W(mm)	T(mm)
BV-H3-N	2500	430, 630, 860	0.3
BV-H5-N	2500	430, 630, 860	0.5

Natural Color Vertical Grain



Product ID	L(mm)	W(mm)	T(mm)
BV-V3-N	2500	430,630,860	0.3
BV-V5-N	2500	430,630,860	0.5

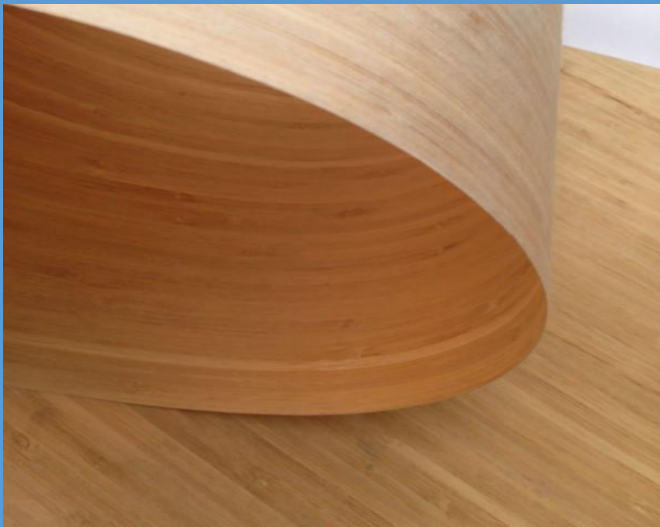
Carbonized Color Horizontal Grain



Product ID	L(mm)	W(mm)	T(mm)
BV-H3-C	2500	430,630,860	0.3
BV-H5-C	2500	430,630,860	0.5

BAMBOO VENEER

Carbonized Color Vertical Grain



Product ID	L(mm)	W(mm)	T(mm)
BV-V3-C	2500	430,630,860	0.3
BV- V5-C	2500	430,630,860	0.5

Zebra Vertical Grain Veneer



Product ID	L(mm)	W(mm)	T(mm)
BV-Z3	2500	430,630,860	0.3
BV-Z5	2500	430,630,860	0.5

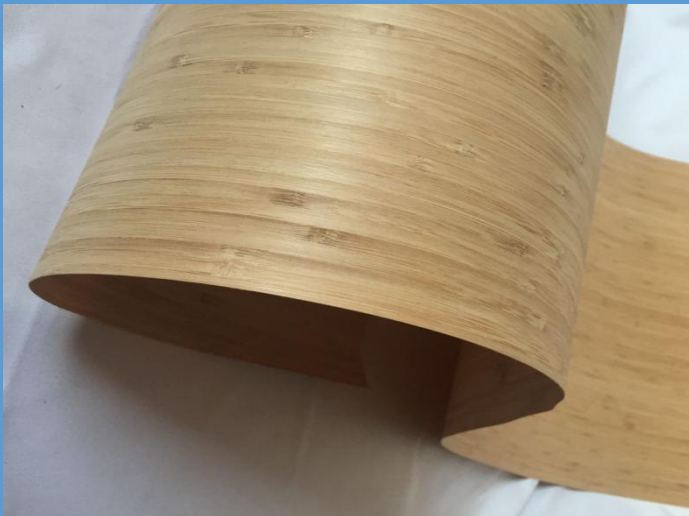
Laminated Veneer (Horizontal/Vertical)



Product ID	L(mm)	W(mm)	T(mm)
BV-LV1	2500	430,630,860	~1.0
BV-LV2	2500	430,630,860	~1.0

BAMBOO VENEER

B-Grade Carbonized Vertical Bamboo Veneer



Product Id	L(mm)	W(mm)	T(mm)
BV-V5-B	2500	630,860	0.5

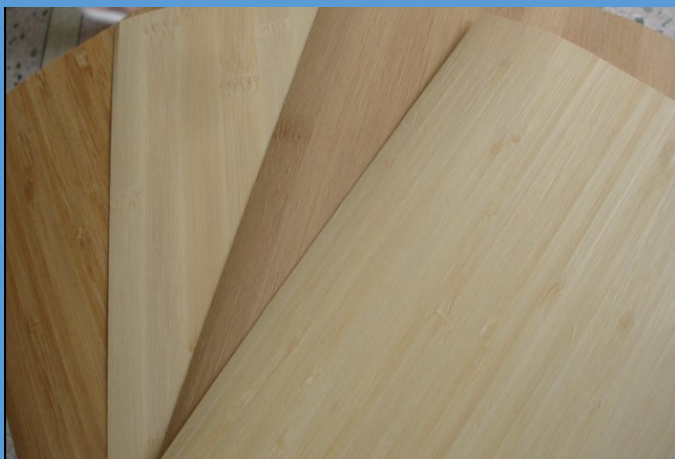
Woven Bamboo Veneer



Product ID	L(mm)	W(mm)	T(mm)
BV-W1	1200	280	~1.0
BV-W2	2440	1220	~1.0

Customize size by order.

Customized Bamboo Veneer



We accept customize size bamboo veneer order with length up-to 3000mm, width up-to 1000mm, and thickness at 0.3mm, 0.5mm and 0.6mm.

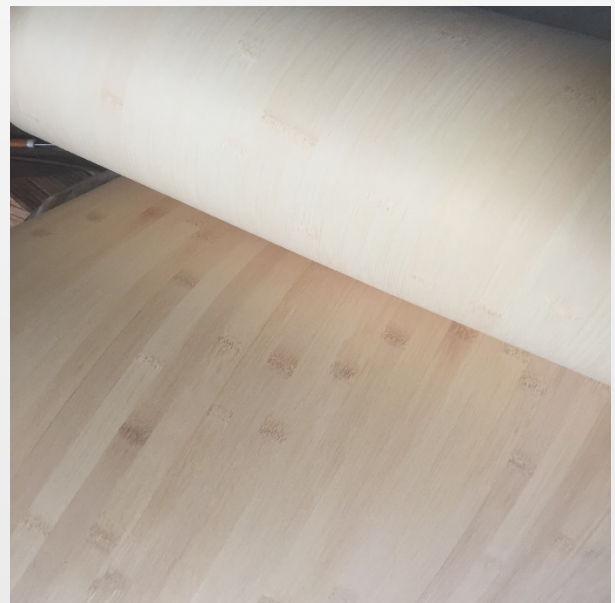
Engineered Wood Veneer

- A complete list of wood veneer Catalog can be provided upon request.



- **Nickname:** Engineered veneer/reconstituted veneer/recon veneer/composite veneer
- **Material:** Poplar, Ayous, Basswood
- **Species:** oak, white maple, white ash, ebony, rosewood, zebrano, teak, walnut, wenge, burli cats' eye, etc.

Come with fleece backing or paper backing.



- **Standard size:** 2500mm(± 10 mm)
*640mm(± 10 mm) *0.5mm(± 0.02 mm)
- **Customize Length:** 2200mm ~ 3400mm
(± 10 mm)
- **Customize Width:** 640mm ~ 1260mm
(± 10 mm)

Nature Wood Veneer

- A complete list of wood veneer Catalog can be provided upon request.



Function: wood veneer for furniture, fancy plywood, MDF, flooring surface decoration.

Directly sliced from log. With different methods of wood material and slicing, can make many wood grains such as quarter cut/straight grain, crown cut/mountain grain.

Grade: Panel grade/Furniture grade/AAA grade/AA grade/A grade/AB grade.

Grain: Crown, Quarter

Moisture: 8-12%



Length: Panel \geq 250cm, Door 210-245cm, Furniture \geq 1120cm

Width: Quarter cut \geq 10cm, Crown cut \geq 12cm

Thickness: 0.25-0.55 mm, we can provide other size according to customers' request also.





Add: 1007, Building b4, Huaye Furniture City, Qiuchang Town,
Huiyang District, Huizhou City

GuangDong, China

Phone: +86 13631902011

Email: sales@htrbamboo.com

www.htrbamboo.com